

WE NEED TO REIMAGINE THE WAY WE LIVE

// *Present and future risks can also interact with each other to form a 'polycrisis' – a cluster of related global risks with compounding effects, such that the overall impact exceeds the sum of each part.* //

World Economic Forum



THE PROBLEMS

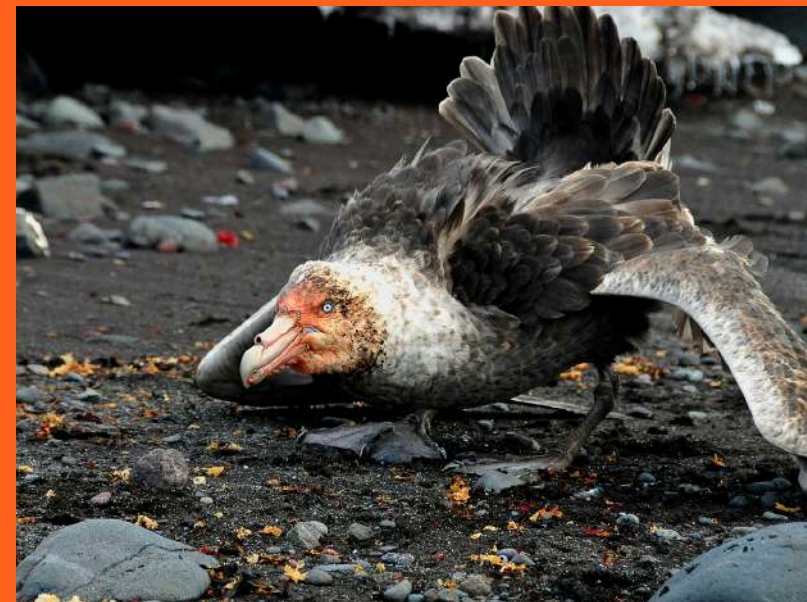
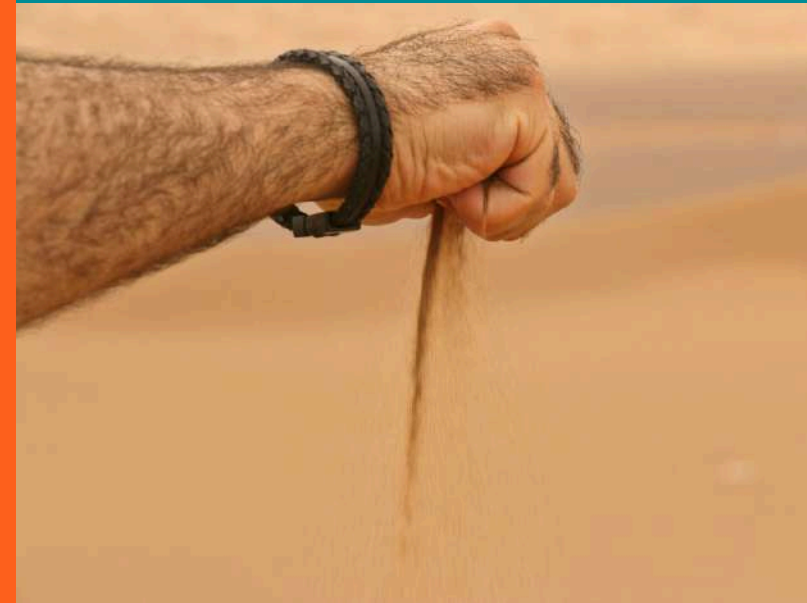
Global problems urgently require innovative and systemic responses across multiple levels.

- climate change
- biodiversity loss
- ecological degradation
- economic inequality
- social divisions
- natural resource depletion
- rise of the far right
- mental health and loneliness

// *We will only achieve the changes these times demand of us through creating a new guiding light for society, through the cultivation of imagination.* **//**

Rob Hopkins, Founder, Transition Movement





THE TRANSITION
MOVEMENT
EXPLORES THESE
CHALLENGES
FROM THE
PERSPECTIVE OF
WHAT CAN BE
DONE AT THE
COMMUNITY
LEVEL.

THE SOLUTION

IF WE...

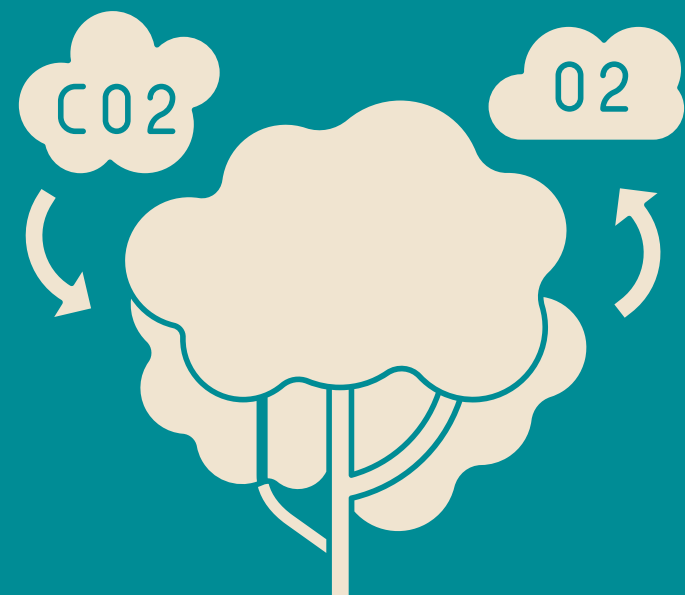
connect, resource and empower people using the Transition Framework

THEN...

numerous locally-led initiatives will flourish, re-imagine and rebuild our world within planetary boundaries

AND...

local communities will become Resilient, Regenerative, Prosocial, Just, Engaged, Collaborative and Networked.

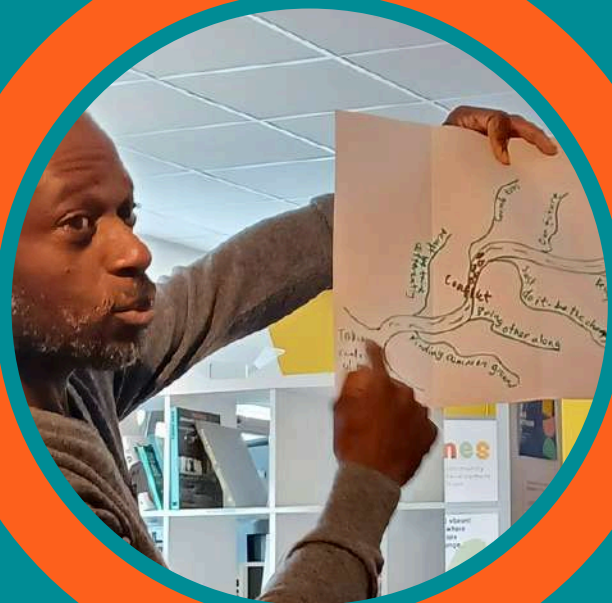


**POWERED BY
IMAGINATION**



3 STEPS TO CHANGE

To help people use the Transition Framework we need to:



Support learning - to train, **connect**, network and skill-share



Do more re-granting - to **resource** the movement



Amplify our story-telling to advocate for and **empower** the movement



THEORY OF CHANGE



Transition Network International

We connect, resource and empower Transition Movement communities around the world so they can better initiate and sustain actions toward a just, resilient and regenerative future.

Vision

Help create communities who can reimagine and rebuild our world and be ...

Outputs



Influencing systemic change



Skill-sharing events



Regranting £1m over 3 years



Digital platform and resources



Partnership building



Training



Amplifying stories

We are a global experimental learning network open to all. Being part of a network means change happens more quickly as we share our ideas widely. With global challenges rapidly worsening we need to act now.



Communities are revitalised and more resilient

Increased ability to undertake transformational change

Transition is more visible, utilised and representative

Improved communication flows across the Movement

More communities engaging globally

Grassroots community groups are better resourced (capacity, confidence, skills and funds)

Outcomes

The Problems

Climate change, biodiversity loss, ecological degradation, economic inequality, social divisions and natural resource depletion.

Our Values

Compassion, Collaboration, Inclusion, Imagination, Subsidiarity, Equity, Transparency, Commoning & Boldness.

Resilient

Regenerative

Prosocial

Just

Engaged

Collaborative

Networked

IMPACT

Over the last 18 years we have seen communities using the **Transition Framework** and the power of imagination to make profound and long lasting changes at their local and regional levels across more than **48 countries** and **23 hubs** supporting **2,000+** local groups.

£

269,500 of grants made to 96 projects in 2023/24

1.2m+

benefitting globally from Transition groups



Read our comprehensive [evaluation here](#)

and our [21 stories of Transition](#)



IMPACT

- Regenerative Economies
- Social Enterprises
- Mutual Aid
- Food Resilience
- Addressing Injustice
- Responding to emergencies and crises
- Municipalities in Transition



100

trainers from

30

countries trained in 2023-24



I was happy to confirm that we are not alone in the world with our doubts, fears and expectations... Very human process, I loved it and I am grateful for having participated in this course!



Facilitators Training Participant





**MAKING
TRANSITION
HAPPEN**

OUR VISION

We envision a world where local communities are Resilient, Regenerative, Prosocial, Just, Engaged, Collaborative and Networked.



“

It's amazing. I've been living in Portalegre forever, 37 years, and I have felt my community and my city crumble, people turning their backs on each other. The community garden we created tells me it is possible to do things with other people. It is possible, we just need to wake up to each other again.

”

Participant, Portalegre em Transição, Portugal



HELPING CREATE RESILIENT COMMUNITIES WHO
CAN REIMAGINE AND REBUILD OUR WORLD.





THANKS

By supporting us we can more effectively **Connect, Resource and Empower** communities and Transition groups around the world, who are working towards a more just and thriving world for all.



BE PART OF SOMETHING BIGGER

Help us today by donating [here](#) or getting in touch with

michaeladdison@transitionnetwork.org

